

6.PRODUCT MAINTENANCE

1. Please don't install the products in damp place
2. Do not use the hard object percussion or friction products, so as not to cause product failure or damage.
3. Clean the unit with a slightly damp soft cloth. Use a mild household detergent. Never use strong solvents such as thinner or benzene as they might damage the finish of the unit.
4. If don't use the monitor please unplug or turn off the power

Notice:

Please obey the local laws to install the product at a right position. Our company is not responsibility for the law issue caused by the illegal installing

USER MANUAL



Before operating the Monitor, please read this manual thoroughly and keep it for future reference.

CONTENT

1. NOTICE	1
2. PRODUCT SPECIFICATION ,FUNCTION AND APPLICATION	1
2.1 Product specification	1
2.2 Product function	1
2.3 Product Application	1
2.4 Product description	1
2.4.1 panel operational specification	2
2.4.2 Backboard specification	2
2.4.3 Connection	2
3. REMOTE CONTROL INTRODUCTION	3
4. MAIN FUNCTION INTRODUCTION	3
4.1 GPS mode operating instructions	3
4.1.1 GPS main interface	3
4.1.2 Navigation	4
4.1.3 Setup	4-11
4.2 AV mode operating instructions	11
4.3 Menu settings instructions	11-12
4.4 reverse gauges setup instructions (optional)	12-13
5. MAIN FUNCTION INTRODUCTION	13
6.PRODUCT MAINTENANCE	14

1. NOTICE

For your safety, don't watch video or operate monitor when driving. Non-professionals don't dismantle the product without permission. Please consult after service agency or send it to the local service department when product in failure.

Caution: Please install the product in legal position; we disclaim any legal liability due to incorrect installation.

Attention: When in cold weather, there appears dark screen during starting up. The display screen will slowly resume to normal with the increasing temperature after power on.

2. PRODUCT SPECIFICATION ,FUNCTION AND APPLICATION

2.1 Product specification

- power supply:DC12V-24V
- Maximum current :less 700MA(12V dc)
- Power consumption: <8.5W (12V dc)
- System: NTSC & PAL (automatically)
- LED panel:7 inch. Screen Ratio:16:9
- Resolution: 800*R.G.B*480
- Working temperature: -10℃ to 60℃
- Storage temperature: -20℃ to 70℃
- Size: 191x140.5x132 mm
- With U shape bracket or stand bracket (optional)
- With sunshade (Removable)
- Weight:980g

2.2 Product function

- This monitor built in GPS Navigation,WINCE6.0 operate system, insert SD Map Card, support max 32GB, External GPS Antenna. Support touches operation, text reading, picture browsing, and MP3/MP4 media player.
- Navigation voice priority
- 2 Ways AV input
- Trigger function: automatic switch AV2 when triggered
- Reversing trigger delay function: Reversing the delay time can be set
- AV IN function, AV-IN and channel 1 are the same video input
- Built in speaker
- Touch button
- Remote controller
- The light sensing function, the screen backlight brightness will automatically adjust the brightness according to monitor ambient change

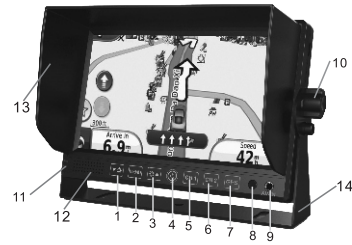
2.3 Product Application

This product adopts digital and high definition TFT panel, easy to be installed and can be widely used in different kinds of vehicles.

2.4 Product description

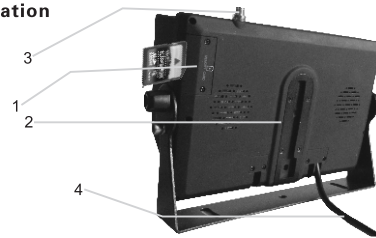
2.4.1 panel operational specification

1. Volume decrease key
2. Menu key
3. Volume increase key
4. Power key
5. CH1 key
6. CH2 key
7. GPS key
8. Remote control window
9. AV IN
10. Bracket knobs
11. Light induction window
12. Built in speaker
13. Sunshade
14. U shape bracket



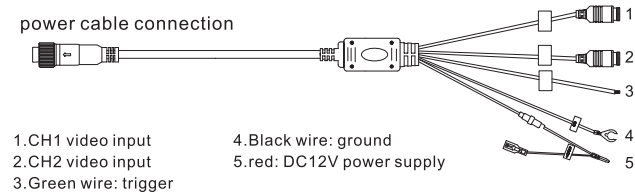
2.4.2 Backboard specification

1. SD slot
2. back clamp
3. GPS antenna interface
4. din cable



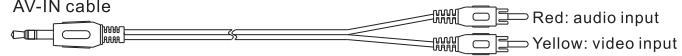
2.4.3 Connection

power cable connection



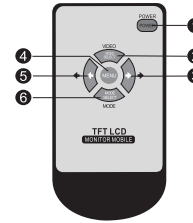
- | | |
|------------------------|----------------------------|
| 1. CH1 video input | 4. Black wire: ground |
| 2. CH2 video input | 5. red: DC12V power supply |
| 3. Green wire: trigger | |

AV-IN cable



2

3. REMOTE CONTROL INTRODUCTION



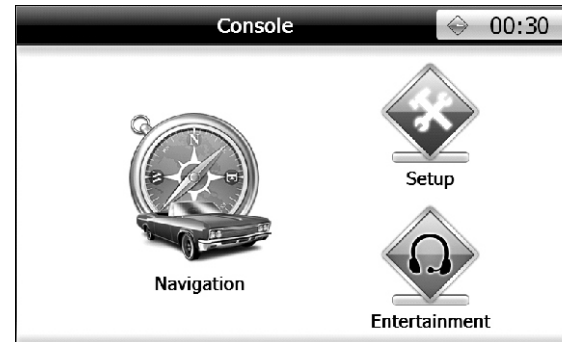
1. Turn on /off key
2. switch at CH1/CH2/GPS mode
3. Positive increase
4. Menu
5. Negative Decrease
6. Mode selection

4. MAIN FUNCTION INTRODUCTION

4.1 GPS mode operating instructions

4.1.1 GPS main interface

After power on, press "GPS" key on panel or "MODE" key on remote control to enter to GPS interface. When monitor being GPS mode, if the monitor without SD card inserted. The monitor will automatically enter the touch screen calibration mode, please use the touch pen to calibration the panel, then the monitor will enter the main interface of GPS (see figure as follows)



3

4.1.2 Navigation

Set up path to navigation software in Navigation setup; select the navigation icon into the navigation map

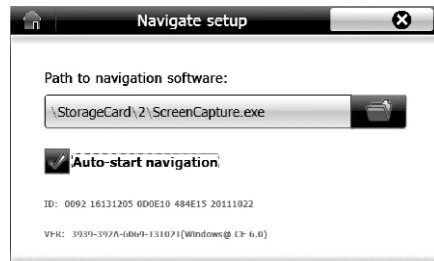
4.1.3 Setup

Press "setup" icon to enter to setting interface. Click the upper left corner home icon of the panel can directly back to the main interface, click on the upper right corner of the icon to return to the previous menu. (please see figure as follows)



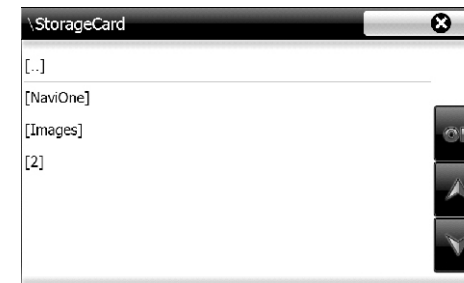
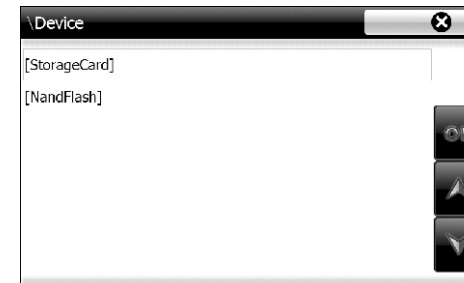
(1) Navigation Setup

Press "setup" icon to enter to Navigation setting interface. You can set the Auto-start navigation and the path to navigation software in Navigation setup. If you select the Auto-start Navigation, after power on the monitor will automatically into the navigation map and not stay in the main interface (please see figure as follows)

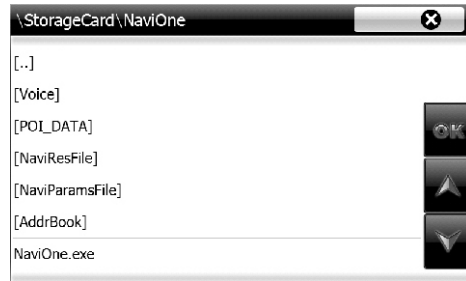


4

Click the folder icon on the right side of the path to navigation software, you can enter the path to navigation software, select you need navigation map software then double click or click the OK icon, the system will automatically return to the navigation setup interface. After set well the path to navigation software, selection of the upper left corner of the home icon to return to the main interface, select the navigation icon in the main interface can directly into the navigation map. (Please see figure as follows)

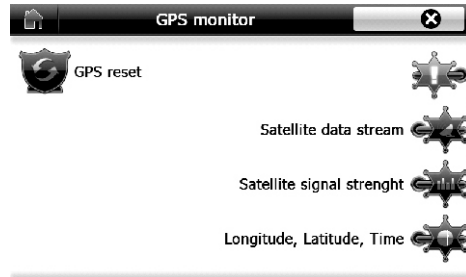


5



(2) GPS monitor

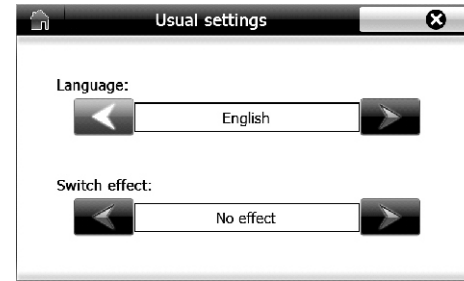
Press the "setup" interface to enter the GPS monitor, we can set the GPS reset, view the number of satellites, satellites signal strength, satellite data stream, the monitor location of latitude and longitude, time information etc(Please see figure as follows).



(3) General settings

Press the "setup" interface to enter to the General settings, you can set the system language and switch effect (Please see figure as follows)

6



(4) Touch screen

Press the "setup" interface to enter the "Touch screen", after calibration the screen well, the monitor will automatically to return main interface (see figure as follows)



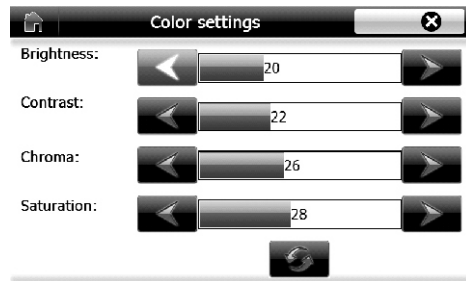
(5) Screen settings

Press the "setup" interface to enter the "Screen" menu to set the Color settings, Adjust position, Adjust size. (see figure as follows)

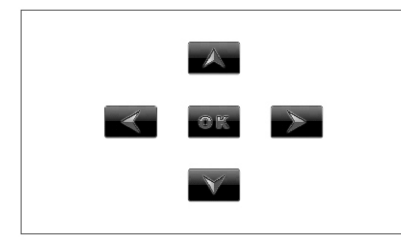
7



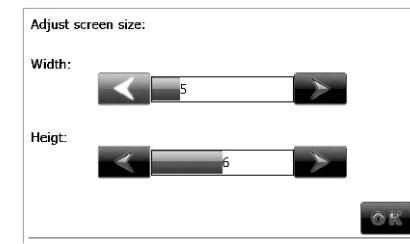
In the **"Color settings"** option to adjust brightness, contrast, chroma , saturation of the image, you also can choose restore default settings. (See figure as follows)



In the **"Adjust position"** option to adjust navigation image on the screen(See figure as follows)

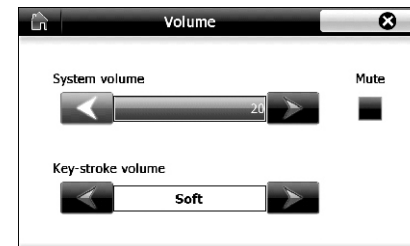


In **"adjust size"** options can be adjusted the level and the vertical size of navigation image on the monitor, See figure as follows



(6) Volume settings

Press the **"setup"** interface to enter the **"Volume"** menu to set the System volume and key-stroke volume(mute optional), (see figure as follows)



(7) Time setup

Press the "setup" interface to enter the "Time setup" menu to set the navigation time, (when the monitor connected well external antenna and received satellite signal, the time will be automatically synchronize local time) and time zone (please according the correct time zone settings the current local time or the system will display wrong time), (see figure as follows)



(8) System settings

Press the "setup" interface to enter the "System setup" menu to set the Initial settings and the Document repair operation (Noted: The system will automatically restore to factory settings after the initial settings, please be careful). (See figure as follows)



4.1.4 The Entertainment

Press the "entertainment icon" into the entertainment function interface, in which choose different player can be showed e-book reading, picture browsing, MP3/MP4 media player, because the machine entertainment function only navigation additional function, so the player only support parts of the file format, if you have cannot play file format, please conversion the format then play. See figure as follows



4.2 AV mode operating instructions

Power on, press the "CH1/CH2" key on panel or press the "MODE" key on remote control to enter AV mode. In the CH1 mode state, put the AV-IN line input, the CH1 signal will be switch to the AV-IN signal

4.3 Menu settings instructions

The monitor can be set the Negative the setting method as follows

When power on, press the "MENU" key on panel or remote control to select the next menu, then press "-" or "+" on panel or remote control to setup your desired setting

■ Brightness

To go to the "Brightness" menu, press "-" or "+" key on panel or remote control to set up the brightness parameter. Then you can select your desired setting. Press the "MENU" key to confirm the setting and go to the next selection.

■ Contrast

To go to the "contrast" menu, press "-" or "+" key on panel or remote control to set up the Contrast parameter. Then you can select your desired setting. Press the "MENU" key to confirm the setting and go to the next selection.

■ **Color**

To go to the "color" menu, press "-" or "+" key on panel or remote control to set up the color. Then you can select your desired setting. Press the "MENU" key to confirm the setting and go to the next selection.

■ **Tone**

To go to the "tone" menu, press "-" or "+" key on panel or remote control to set up the tone. Then you can select your desired setting. Press the "MENU" key to confirm the setting and go to the next selection.

■ **Volume**

To go to the "Volume" menu, press "-" or "+" key on panel or remote control to set up the volume. Then you can select your desired setting. Press the "MENU" key to confirm the setting and go to the next selection.

■ **MODE**

To go to the "MODE" menu, press "-" or "+" key on panel or remote control to set up the image 16:9 or 4:3. Then you can select your desired setting. Press the "MENU" key to confirm the setting and go to the next selection.

■ **Turn over**

To go to the "Turn over" menu, press "-" or "+" key on panel or remote control to set up the up/down/ right/left. Then you can select your desired setting. Press the MENU key to confirm the setting and go to the next selection.

■ **ACC TIME**

To go to the "ACC TIME" menu, press "-" or "+" key on panel or remote control to set up the reverse delay time(0 second/2 seconds/five seconds/ten seconds for your selection). Then you can select your desired setting. Press the "MENU" key to confirm the setting and go to the next selection.

■ **Language**

To go to the "Language" menu, press "-" or "+" key on panel or remote control to set up the language , Then you can select your desired setting. Press the "MENU" key to confirm the setting and go to the next selection.

■ **Reset**

To go to the "Reset" menu, press "-" or "+" key on panel or remote control to set up the parameters of the current set back to factory default values.

4.4 reverse gauges setup instructions (optional)

The monitor can be set up channel 2 as trigger display; can be set display position and width of the reverse gauges, set as follows:

In the trigger reversing state, the monitor will display reversing gauges. Press the MENU button on the remote control or monitor, then press the "+" or "-" key to adjust

gauges position on the screen and gauges width, adjusting to the satisfaction of their own position, press the MENU key to exit the menu settings (gauges set "H" represents gauges is displayed on the screen of the horizontal position, "V" represents the gauges on the screen shown on the vertical position, "W" represents the scale display on the screen width).

NOTES

Caution: For your safety, don't watch video or operate monitor when driving

5. MAIN FUNCTION INTRODUCTION

1.Remote control *1pc 	2. Cable *1 pc; AV-IN cable *1pc 
3.4 PIN TO RCA ADAPTOR*1pc 	4.GPS antenna *1pc 
5.Manual*1pc 	6.Touch pen*1pc; Allen Key*1pc 