

HARDSTONE



MANUALE INSTALLAZIONE HS F-FC44V

INTERFACE UCONNECT 5INCH

Categoria: Interfaccia retrocamera

Compatibile con: Sistema UCONNECT 5" (FCA).

Corpo radio 1din.

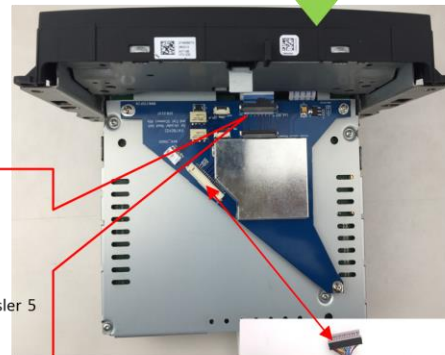
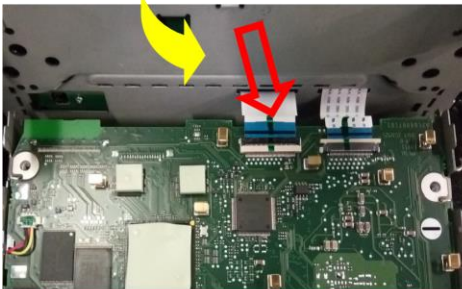
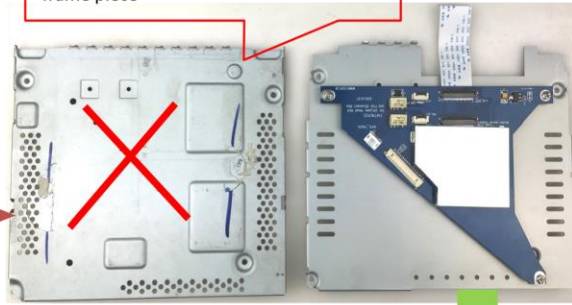
Avvertenze: L'azienda **HARDSTONE ITALIA** non si assume la responsabilità di eventuali danni causati, all'unità originale, da personale non esperto, o non qualificato.

HS F-FC44V Ver. 1.0 12 luglio 2019

1. System connection:

(1) Camera solution

Take out the top metal cover on the head unit. and replace it with the right-side frame piece



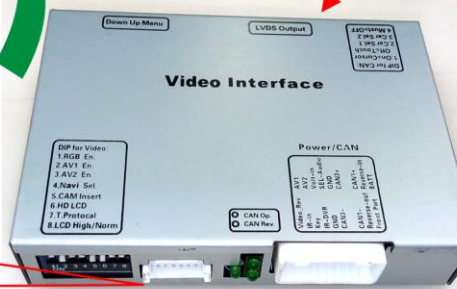
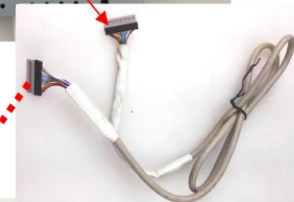
Make the video ribbon go through the PCB:

PCB_IN of the PCB's below side: The inserted ribbon connected to the PCB of LCD.

LCD_OUT of the PCB's top side: The OEM ribbon go to PCB's top side as marked in pic.

There is another connector near the shielding case. This one is used for Chrysler 5 inch.

Then the pic can be inserted into the LCD.



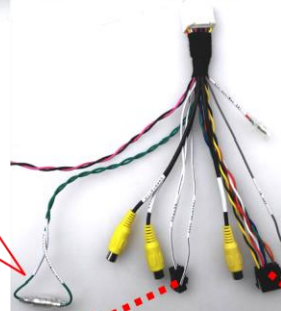
External RGB input.

FOSP's HD navigation can be connected here.

Connect behind CD, for CAN code of reverse and power supply.

These green wires are reverse voltage output and input.

- It can give power to camera also.
- The installer can also force manual camera display by splitting the connection and giving a 12V to the Reverse-IN wire.



External keypad. This is one extra method of switching, in case the CAN code get changed.

